



AGENDA
LAKE CHARLES URBANIZED AREA METROPOLITAN PLANNING
ORGANIZATION
TECHNICAL ADVISORY COMMITTEE (TAC)
July 21, 2016 AT 9:00 AM
2ND FLOOR, BOARDROOM
SEED CENTER
4310 RYAN ST., LAKE CHARLES, LOUISIANA, 70605

Roll Call

I. Review and Adoption of Meeting Minutes (May 19, 2016)

II. Old Business

A. INFORMATION ONLY: The purchase of MAP trucks was approved at the TPC meeting on March 23, 2016, with the MPO funding 50% or \$333,178.75 of the total cost, using STP<200K funds. LADOTD District 7 will be taking care of Title 39 Professional Services Contract to lease and maintain two MAP trucks for I-10 and I-210 daytime shifts, beginning around July 1, 2016. Todd Landry has spoken with LADOTD personnel, whereby, the specific I-210 main span re-decking project funds will purchase a new third truck, to be utilized for 24 hours.

B. INFORMATION ONLY: Staff has made contact with the Complete Streets Advisory Committee and will have a meeting on May 19, 2016 at the SEED Center at 2 pm.

III. New Business

- A. INFORMATION ONLY:** HSTP Plan document has been updated for FY 17 (2016-17). **(SEE Appendix A)**
- B. RECOMMENDATION FOR ADOPTION:** Staff is seeking recommendation to bring this Amendment V to the TIP, which is to be sent to the TPC for final approval. The actual chart will be in the Transit Element section of the TIP. This amendment comprises FTA project requests from transit agencies and providers that have been requested or funded for FY 17 (2016-17) in the urbanized area. **(SEE Appendix B)**
- C. INFORMATION ONLY:** Staff made administrative modifications from the White Board and TAC/TPC joint meeting on May 28, 2016. **(SEE Appendix C)**
- D. RECOMMENDATION FOR AMENDMENT OF THE MTP:** Calcasieu Transportation Initiative (CTI) was presented at the White Board meeting on April 28, 2016, by Tim Conner, requesting support for the initiative. Overall, this contains a request that the Metropolitan Transportation Plan be amended at some point for additional projects, along with a reevaluation of the project rankings in response to the industrial expansion occurring in the MPO area, related to congestion issues. It was suggested that more information be made available about CTI to the TAC, before any TPC approval, with regards to impacts on the TIP/MTP, etc. Staff has added a preliminary analysis, whereby, we put forth questions in charts for each some potential projects. **(SEE Appendix D)**.
- E. FOR DISCUSSION:** Staff had discussed the potential of adding a Transit representative to the TAC. The staff is interested in feedback from the TAC, but will also seek interests from the HSTP/Transit Committee in the meeting on June 28, 2016. It would take a change of the Bylaws, approved by the TPC to make it official.
- F. FOR DISCUSSION:** There is an opportunity for some additional studies. Some of the preliminary ideas are below.
 - a.** Bike/Ped, Complete Streets, and/or Transit Study for Westlake and Sulphur
 - b.** Smart Growth Plan.
 - c.** Access management on Ryan Street.
 - d.** What can we do for Westlake (Access management, what can be widened)?
 - e.** Specific/in-depth transportation impact study (for MPO study area as affected by sudden growth)>

IV. Adjournment

Appendix A

HSTP Plan Update for FY 17 (2016-17)



IMPERIAL CALCASIEU REGIONAL PLANNING & DEVELOPMENT
COMMISSION

2016

**Coordination In Human Services
Transportation Plan**

Prepared by the

**Imperial Calcasieu Regional Planning & Development Commission
(IMCAL)**

In Cooperation
with the

Louisiana Department of Transportation and Development
Federal Transit Administration
Federal Highway Administration
And The
Technical Advisory Committee

Adopted by the

LAKE CHARLES URBANIZED AREA METROPOLITAN PLANNING ORGANIZATION
TRANSPORTATION POLICY COMMITTEE
Approved June 29, 2007
Updated June 10, 2016

4310 RYAN STREET, SUITE 330
LAKE CHARLES, LA 70605
PHONE: 337-433-1771
EMAIL: imcal@imcal.la
WEBSITE: www.imcal.la

Allen Parish COA	Elderly Individuals and Individuals with Disabilities (Capital)	FY '16-'17 & 5310	(1) 6-1 MV: 6 passenger, 1 driver, 1 wheelchair access	Submitted January 5, 2016	
Allen Parish COA	Operating Assistance Grant	FY '16-'17 & 5311	(1) 6-1 MV: 6 passenger, 1 driver, 1 wheelchair access	Submitted January 5, 2016	
Calcasieu ARC	Elderly Individuals and Individuals with Disabilities (Capital)	FY '16-'17 & 5310	(1) Bus, Type 18-2B and (1) Bus, Type 12-6B	Submitted December 1, 2015	
Calcasieu Parish Voluntary COA	Elderly Individuals and Individuals with Disabilities (Operations)	FY '16-'17 & 5310	To provide transportation to the elderly and disabled of Calcasieu Parish	Submitted January 7, 2016	
Calcasieu Parish Voluntary COA	New Freedom Individuals with Disabilities Program Grant (Operations)	FY '16-'17 & 5317	To provide transportation for jobs to the disabled of Calcasieu Parish	Submitted January 7, 2016	
Calcasieu Parish Transit (MPO Recipient)	Operating and Capital Assistance Grant	FY '16-'17 & 5311	To provide transportation to Calcasieu Parish	Submitted January 5, 2016	
Calcasieu Parish Transit (MPO Recipient)	Job Access and Reverse Commute (JARC) Operating Assistance	FY '16-'17 & 5316	To provide transportation to Calcasieu Parish	Submitted January 5, 2016	
Cameron Parish COA	Elderly Individuals and Individuals with Disabilities (Capital)	FY 16-17 & 5310	To provide transportation to the rural area of Cameron Parish	Submitted November 30, 2015	Did Not Qualify
Cameron Parish COA	Operating Assistance Grant (Operations)	FY '16-'17 & 5311	To provide transportation to the rural area of Cameron Parish	Submitted November 30, 2015	APPROVED May 3, 2016
City of DeRidder/Beauregard Parish Transit	Operating Assistance Grant	FY '16-'17 & 5311	To provide transportation to the rural area of Beauregard Parish	Submitted November 10, 2015	
Jefferson Davis Parish COA	Operating Assistance Grant	FY '16-'17 & 5311	To provide transportation to the rural area of Jefferson Davis Parish	Submitted January 26, 2016	

■ Note: Signifies request made in the urbanized area for TIP entry.

Appendix B

Transit Element to the TIP for FY 17 (2016 -17)

Transportation Improvement Plan (TIP) for Lake Charles					
Record of Adoptions and Amendments					
Record Item No.	Project No.	Resolution No.	Date Modified	TPC Viewing Date	Description of Change
54		Amendment V	Scheduled for adoption 6/??/2016	6/??/2016	Added Transit Elements to the TIP for FY 17.

FY 17 (2016-17)

State Project	Project Description	Proposed Improvement	Cost in (000)	Federal Share	Match in (000)	Funding Source	Letting Date	Comments
	City of Lake Charles Transit	Operating 50/50	1,548	774	774	Section 5307	N/A	N/A
	City of Lake Charles Transit	Planning 80/20	84	67	17	Section 5307	N/A	N/A
	City of Lake Charles Transit	Preventative Maintenance	637	510	127	Section 5307	N/A	N/A
	City of Lake Charles Transit Elderly and Disabled	Capital Expenditures	80	64	16	Sec. 5310 (16B2)	N/A	N/A
	City of Lake Charles Transit	Bus - Rolling Stock	823.5	700	123.5	Section 5307	N/A	N/A
	City of Lake Charles Transit	Bus - Station/Stops/Terminals	62.5	50	12.5	Section 5307	N/A	N/A
	City of Lake Charles Transit	Bus - Support Equipment and Facilities	87.6	70.1	17.5	Section 5307	N/A	N/A
	City of Lake Charles Transit	Bus - Signal and Communication Equipment	170	136	34	Section 5307	N/A	N/A
	City of Lake Charles Transit	Bus - Other Capital Items	800	640	160	Section 5307	N/A	N/A
	City of Lake Charles Transit	Operating 50/50	1,816.5	1,816.5	3,633	Section 5307	N/A	N/A
	Calcasieu Parish Voluntary COA	Operating	170	170	0	Section 5310	N/A	N/A
	Calcasieu Parish Voluntary COA	Capital Expenditures - Buses	158.1	134.3	23.7	Section 5317	N/A	N/A
	Calcasieu Parish Transit	Capital Expenditures	233.2	116.6	116.6	Section 5311	N/A	N/A
	Calcasieu Parish Transit	Operating 50/50	314.6	157.3	157.3	Section 5311	N/A	N/A
	Calcasieu Parish Transit Job Access Reverse Commute	Operating 50/50	334.6	167.3	167.3	Section 5316	N/A	N/A
	Calcasieu ARC	Capital Expenditures	69	60	9	Section 5310	N/A	N/A
	Calcasieu ARC	Capital Expenditures	67	58.3	8.7	Section 5310	N/A	N/A

Appendix C

Administrative Modifications from the Whiteboard Meeting

Transportation Improvement Plan (TIP) for Lake Charles					
Record of Adoptions and Amendments					
Record Item No.	Project No.	Resolution No.	Date Modified	TPC Viewing Date	Description of Change
51	L.000062	Administrative Change	5/12/2016	5/25/2016	Increased the total cost of the MAP program from \$184K to \$666.3K, with 50/50 fed share in FY 2016
52	H.010916	Administrative Change	5/12/2016	5/25/2016	LA DOTD has changed the total cost of the Prien Lake Re-Decking and Safety Improvements from \$29M to \$33M, with 90/10 fed share FY 2016.
53	H.007130	Administrative Change	5/12/2016	5/25/2016	Construction phase moved from FY 2016 to FY 2017.
54	H.007113	Administrative Change	5/12/2016	5/25/2016	Engineering and construction phase moved from FY 2016 to FY 2017.

Transportation Improvement Plan (TIP) for Lake Charles									
FY 16 (OCT '15 -- SEP '16)									
Project No.	Route - Project Name	Project Description / Limits	Proposed Improvement	Work Phase	Est. Cost (thousands)	10% contingency	Est. Cost of Construction + Construction Contingencies	Federal Share (thousands)	Fund Source
L.000062	MAP	Motor Assistance Patrol	Motorist assistance in case of breakdown or accident		417		417.0	333.6	Local and DOTD
H.010916	Prien Lake Re-Decking & Safety Improvements	I-210 Bridge	Redeck and replace rail on main spans. Establish composite action and provide safety inspection walkway for main girders.	C	33,000.00	3,300.00	36,300.00	32,670.00	NHPP

Transportation Improvement Plan (TIP) for Lake Charles									
FY 17 (OCT '16 -- SEP '17)									
Project No.	Route - Project Name	Project Description / Limits	Proposed Improvement	Work Phase	Est. Cost (thousands)	10% contingency	Est. Cost of Construction + Construction Contingencies	Federal Share (thousands)	Fund Source
H.007130	John Stine Road	Myrtle Springs to Foster	Widening	C	6,050	605.0	6,655.0	4,840	STP < 200k
H.007113	J. Bennet Johnston Avenue	Overlay	Overlay	E	40.00		40.00	32.00	STP < 200k
				C	580	58.0	638.0	510.4	STP < 200k

Appendix D

Calcasieu Transportation Initiative

MPO Staff Preliminary Analysis for TAC

Calcasieu Transportation Initiative

Introduction

Initiative goal is to expedite capacity improvements on arterial routes

- Previous Studies identified existing and expected burdens on road network
 - Calcasieu Parish 2040 Master Transportation Plan forecast existing and future deficiencies on state routes and identified projects.
 - 2014 SWLA Regional Impact Study identified population growth and impacts to local infrastructure and services.
- State/Federal Funding deficient – will require local participation
 - DOTD Transportation Funds are incapable of meeting statewide demands.
 - Federal Transportation Funds are limited.
 - Local funds will be needed to move projects forward.

Calcasieu Transportation Initiative

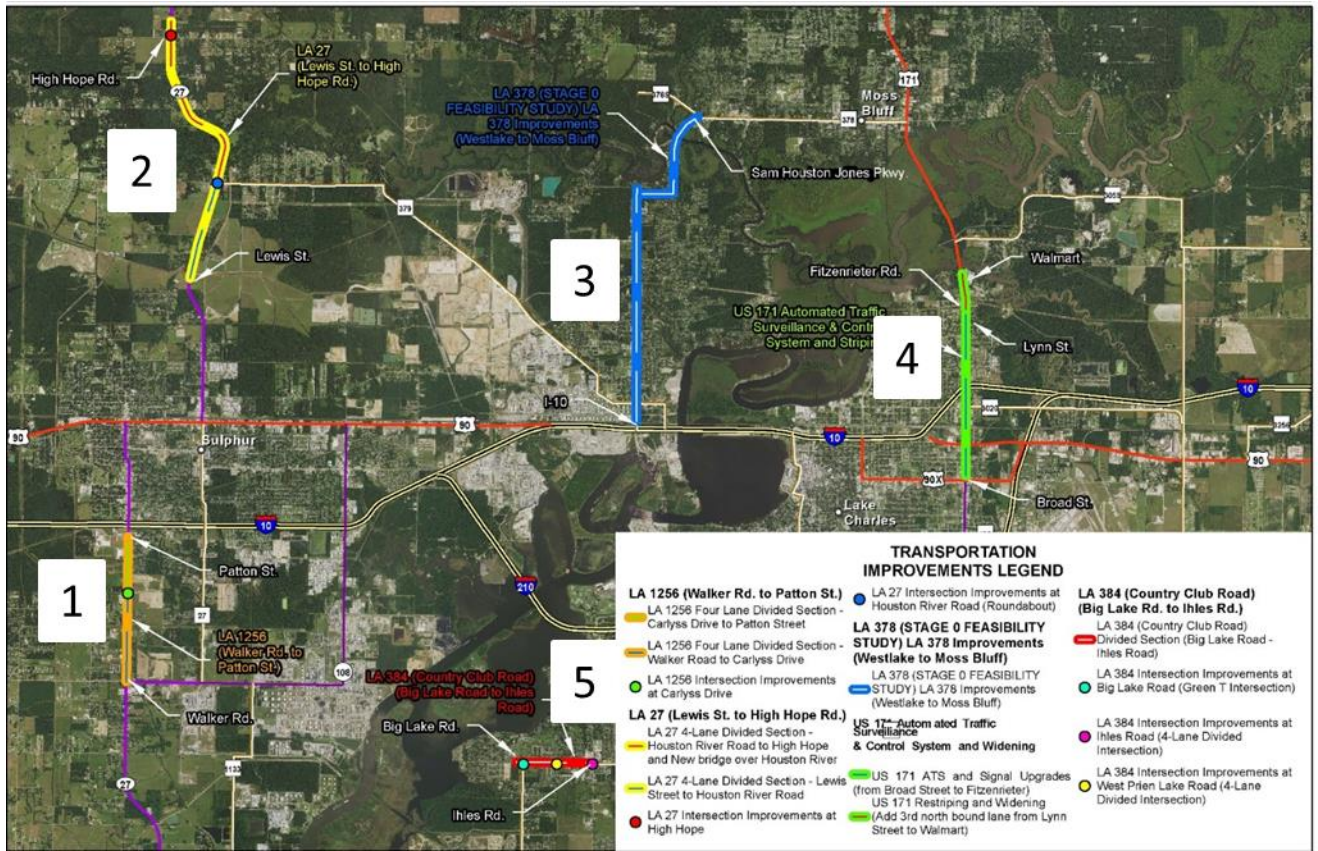
Project Summary

PROJECT LOCATION	COST TO COMPLETE
LA 1256 (Walker Rd. – Patton St.)	\$32.8 M
LA 27 (Lewis St. – High Hope Rd.)	\$40.5 M
LA 378 (STAGE 0 FEASIBILITY STUDY LA 378 Improvements) (Westlake to Moss Bluff)	\$70.8 M
US 171 Automated Traffic Surveillance & Control System and Widening	\$ 4.1 M
LA 384 (Country Club Road) (Big Lake Rd. – Ihles Rd)	\$25.9 M
TOTAL ESTIMATE:	\$174.1 M

Calcasieu Transportation Initiative

Why a Local Transportation Initiative?

- Calcasieu Parish retains control....
 - Local control of schedule
 - Local control of phasing/prioritization
 - Greater opportunities for local firms to participate
 - Expedited project delivery
- Local funding will be required to attract State/Federal funds
 - Many areas competing for scarce state/fed funds
 - Traditional cost share ratios (80/20) may be insufficient
 - Innovative approaches can maximize local dollars while expediting projects



TRANSPORTATION IMPROVEMENTS LEGEND

<p>LA 1256 (Walker Rd. to Patton St.)</p> <ul style="list-style-type: none"> LA 1256 Four Lane Divided Section - Caryss Drive to Patton Street LA 1256 Four Lane Divided Section - Walker Road to Caryss Drive LA 1256 Intersection Improvements at Caryss Drive <p>LA 27 (Lewis St. to High Hope Rd.)</p> <ul style="list-style-type: none"> LA 27 4-Lane Divided Section - Houston River Road to High Hope and New bridge over Houston River LA 27 4-Lane Divided Section - Lewis Street to Houston River Road LA 27 Intersection Improvements at High Hope 	<p>LA 27 Intersection Improvements at Houston River Road (Roundabout)</p> <p>LA 378 (STAGE 0 FEASIBILITY STUDY) LA 378 Improvements (Westlake to Moss Bluff)</p> <ul style="list-style-type: none"> LA 378 (STAGE 0 FEASIBILITY STUDY) LA 378 Improvements (Westlake to Moss Bluff) <p>US 171 Automated Traffic Surveillance & Control System and Widening</p> <ul style="list-style-type: none"> US 171 ATS and Signal Upgrades (from Broad Street to Fitznerier) US 171 Restriping and Widening (Add 3rd north bound lane from Lynn Street to Walmart) 	<p>LA 384 (Country Club Road) (Big Lake Rd. to Ihles Rd.)</p> <ul style="list-style-type: none"> LA 384 (Country Club Road) Divided Section (Big Lake Road - Ihles Road) LA 384 Intersection Improvements at Big Lake Road (Green T Intersection) LA 384 Intersection Improvements at Ihles Road (4-Lane Divided Intersection) LA 384 Intersection Improvements at West Prien Lake Road (4-Lane Divided Intersection)
---	--	--

Calcasieu Parish Police Jury

Calcasieu Parish
LEGEND

Cities

- Population 10,000 - 300,000

Existing Roadway

- Interstate
- US Highway
- 2-Lane State Highway
- Urban State Highway
- Rural State Highway

Date:	1/25/2015
Project Number:	210112
Drawn By:	MMS
Checked By:	JO

1) **LA 1256** (Walker Rd to Patton St.)

CTI in the Metro. Transportation Plan (MTP)?	CTI Project is in Which Stage of the MTP?	CTI Project Impact Existing or Stage I TIP Projects?	Proximity To Existing TIP Projects	Will It Benefit the Transportation Network
Yes.	Stage III (2031-40)	Yes. More analysis needed	Adjacent. More Analysis Needed	More analysis needed

Comment: Both CTI and MTP include widening to 4 lanes along exact same segment. However, CTI lists intersection improvement at LA 1256/Carylss Dr., unlike the MTP.

2) **LA 27** (Lewis St to High Hope Rd)

CTI in the Metro. Transportation Plan (MTP)?	CTI Project is in Which Stage of the MTP?	CTI Project Impact Existing or Stage I TIP Projects?	Proximity To Existing TIP Projects	Will It Benefit the Transportation Network
Yes.	Stage III (2031-40)	Yes. More analysis needed	Adjacent. More Analysis Needed	More analysis needed

Comment: Both CTI and MTP include widening to 4 lanes. The CTI segment is 1 mile shorter than the MTP. Furthermore, CTI lists intersection improvement at LA 27/High Hope Rd and adding roundabout at LA 27/High Hope Rd, unlike the MTP.

3) **LA 378** (I-10 in Westlake to Houston Jones Pkwy in Moss Bluff) (Feasibility Study)

CTI in the Metro. Transportation Plan (MTP)?	CTI Project is in Which Stage of the MTP?	CTI Project Impact Existing or Stage I TIP Projects?	Proximity To Existing TIP Projects	Will It Benefit the Transportation Network
Yes, partially.	Stage II (2021-30)	No.	Nearby. More analysis needed	More analysis needed

Comment: The CTI is a Stage Zero Feasibility Study, while the MTP is a road widening to 5 lanes, along with bridge replacement. Also, the MTP segment is from Sam Houston Jones Pkwy to John Stine Rd, which is 2 miles shorter than the CTI feasibility study segment.

4) **US 171** Automated Traffic Surveillance & Control System and Widening (Walmart to Broad St)

CTI in the Metro. Transportation Plan (MTP)?	CTI Project is in Which Stage of the MTP?	CTI Project Impact Existing or Stage I TIP Projects?	Proximity To Existing TIP Projects	Will It Benefit the Transportation Network
No.	None	No.	Nearby. More analysis needed	More analysis needed

Comment: CTI would include ATS and signal upgrades, restriping, and widening. More analysis needed to see if it supports the MTP.

5) **LA 384** (Big Lake Rd to Ihles Rd)

CTI in the Metro. Transportation Plan (MTP)?	CTI Project is in Which Stage of the MTP?	CTI Project Impact Existing or Stage I TIP Projects?	Proximity To Existing TIP Projects	Will It Benefit the Transportation Network
No.	None	Yes. More analysis needed	Adjacent. More Analysis Needed	More analysis needed

Comment: CTI would include intersection improvements. More analysis needed to see if it supports the MTP.